

Plat of Survey

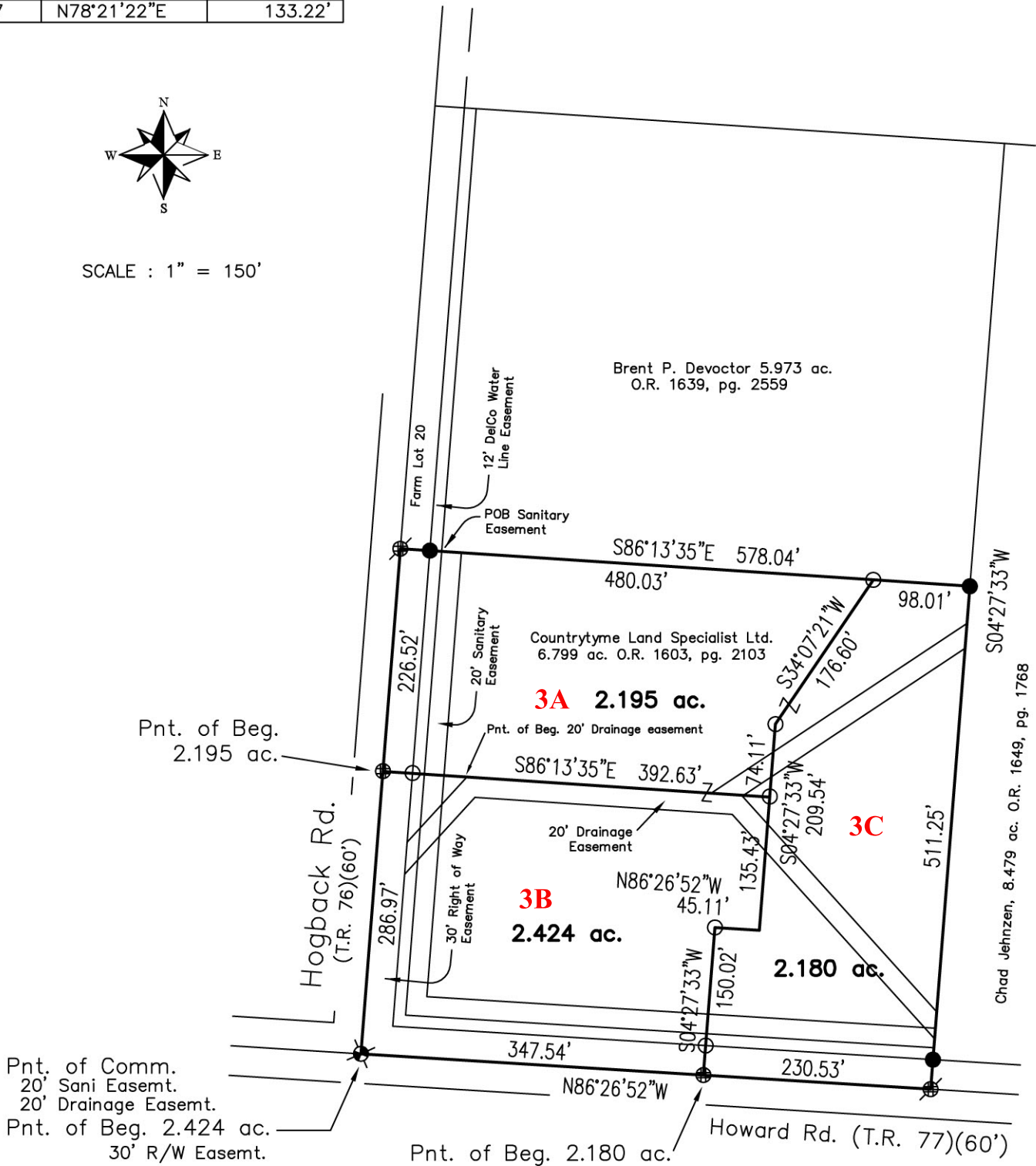
Guider Surveying, Inc.

LINE	BEARING	DISTANCE
L1	S85°32'27"E	27.45'
L2	N78°31'04"E	60.39'
L3	N60°32'14"E	121.68'
L4	N80°20'39"E	66.81'
L5	S82°17'20"E	115.62'
L6	S59°46'09"E	92.50'
L7	N78°21'22"E	133.22'

State of Ohio, Delaware County, Brown Township
Range 18, Township 5, Section 4
Farm Lot 20, USML



SCALE : 1" = 150'



Legend

- ⊕ - MAG nail set
- ⊗ - MAG nail found
- - 5/8" Iron pin found
- ⊗ - Railroad spike found
- - 5/8" x 30" Iron pin set with cap marked "GUIDER S 7752"

Basis of Bearing

State Plane Coordinate System
Ohio North Zone, NAD83

Scale in Feet



Surveyor's Certification

I hereby certify that this plat is an accurate representation of a field survey made by me and is correct to the best of my knowledge.



Timothy L. Guider

Timothy L. Guider R.S. #7752
Guider Surveying, Inc.
19550 Delaware County Line Road
Marysville, Ohio 43040
(740)-666-8902

Rev 8/26/20
2/7/19

Date